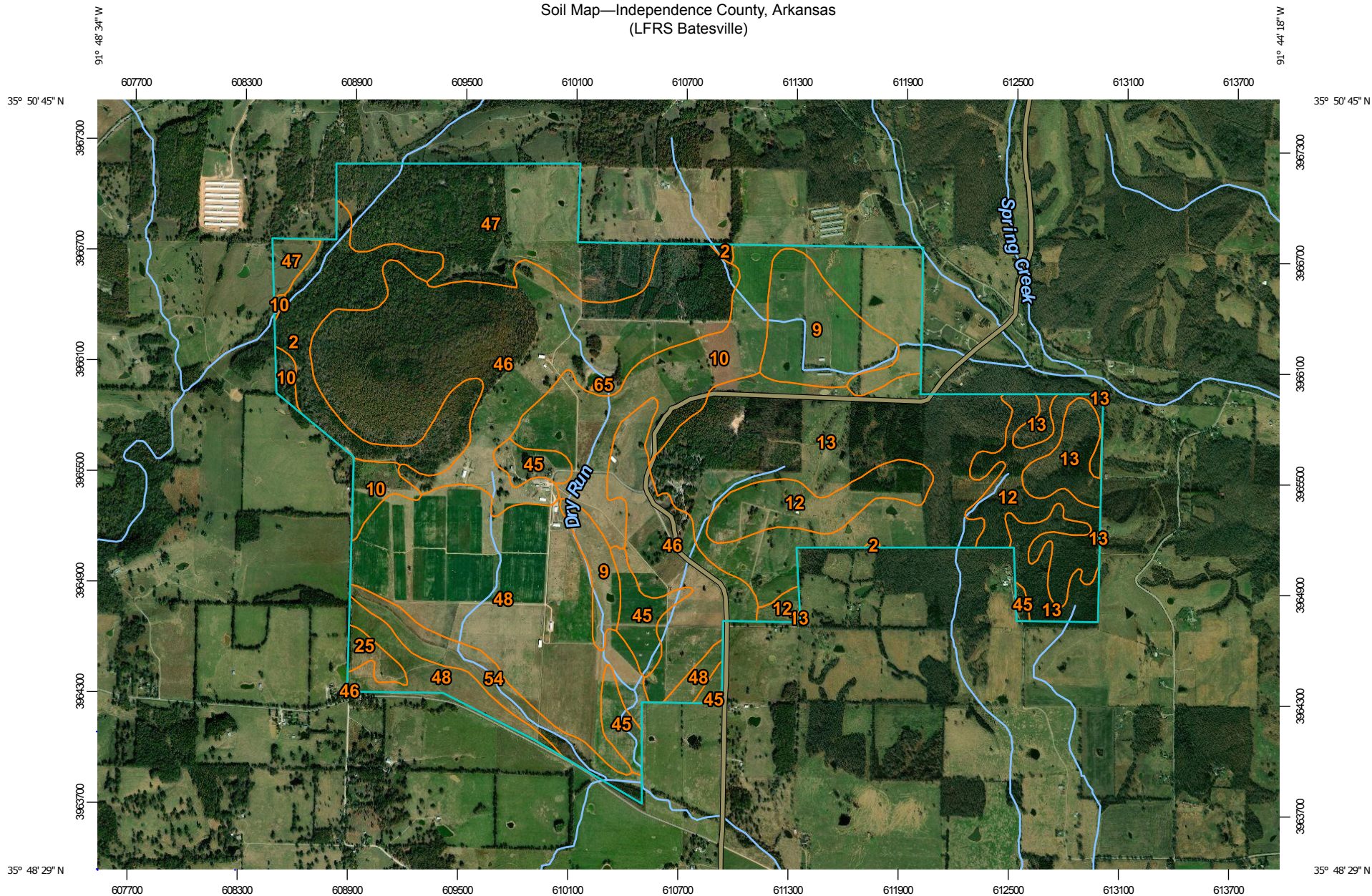
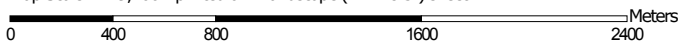


Soil Map—Independence County, Arkansas  
(LFRS Batesville)




Map Scale: 1:29,400 if printed on A landscape (11" x 8.5") sheet.



Map projection: Web Mercator Corner coordinates: WGS84 Edge tics: UTM Zone 15N WGS84

## MAP LEGEND

### Area of Interest (AOI)

 Area of Interest (AOI)

### Soils

 Soil Map Unit Polygons

 Soil Map Unit Lines

 Soil Map Unit Points

### Special Point Features



Blowout



Borrow Pit



Clay Spot



Closed Depression



Gravel Pit



Gravelly Spot



Landfill



Lava Flow



Marsh or swamp



Mine or Quarry



Miscellaneous Water



Perennial Water



Rock Outcrop



Saline Spot



Sandy Spot



Severely Eroded Spot



Sinkhole



Slide or Slip



Sodic Spot



Spoil Area



Stony Spot



Very Stony Spot



Wet Spot



Other



Special Line Features

### Water Features



Streams and Canals

### Transportation



Rails



Interstate Highways



US Routes



Major Roads



Local Roads

### Background



Aerial Photography

## MAP INFORMATION

The soil surveys that comprise your AOI were mapped at 1:20,000.

Please rely on the bar scale on each map sheet for map measurements.

Source of Map: Natural Resources Conservation Service

Web Soil Survey URL:

Coordinate System: Web Mercator (EPSG:3857)

Maps from the Web Soil Survey are based on the Web Mercator projection, which preserves direction and shape but distorts distance and area. A projection that preserves area, such as the Albers equal-area conic projection, should be used if more accurate calculations of distance or area are required.

This product is generated from the USDA-NRCS certified data as of the version date(s) listed below.

Soil Survey Area: Independence County, Arkansas

Survey Area Data: Version 17, Sep 12, 2018

Soil map units are labeled (as space allows) for map scales 1:50,000 or larger.

Date(s) aerial images were photographed: Oct 12, 2011—Sep 9, 2017

The orthophoto or other base map on which the soil lines were compiled and digitized probably differs from the background imagery displayed on these maps. As a result, some minor shifting of map unit boundaries may be evident.

## Map Unit Legend

| Map Unit Symbol                    | Map Unit Name   | Acres in AOI   | Percent of AOI |
|------------------------------------|---|----------------|----------------|
| 2                                  | Arkana-Moko complex, 3 to 8 percent slopes, very rocky      | 121.3          | 5.3%           |
| 9                                  | Captina silt loam, 1 to 3 percent slopes                    | 112.3          | 4.9%           |
| 10                                 | Captina silt loam, 3 to 8 percent slopes                    | 256.0          | 11.2%          |
| 12                                 | Clarksville very gravelly silt loam, 8 to 20 percent slopes | 158.4          | 6.9%           |
| 13                                 | Clarksville very cherty silt loam, 20 to 40 percent slopes  | 410.9          | 18.0%          |
| 25                                 | Gepp very cherty silt loam, 3 to 8 percent slopes           | 12.6           | 0.6%           |
| 45                                 | Noark very gravelly silt loam, 3 to 8 percent slopes        | 69.9           | 3.1%           |
| 46                                 | Noark very gravelly silt loam, 8 to 12 percent slopes       | 508.7          | 22.3%          |
| 47                                 | Noark very cherty silt loam, 12 to 30 percent slopes        | 221.8          | 9.7%           |
| 48                                 | Peridge silt loam, 3 to 8 percent slopes                    | 352.7          | 15.5%          |
| 54                                 | Secesh silt loam, frequently flooded                        | 55.3           | 2.4%           |
| 65                                 | Water   | 1.5            | 0.1%           |
| <b>Totals for Area of Interest</b> |   | <b>2,281.3</b> | <b>100.0%</b>  |