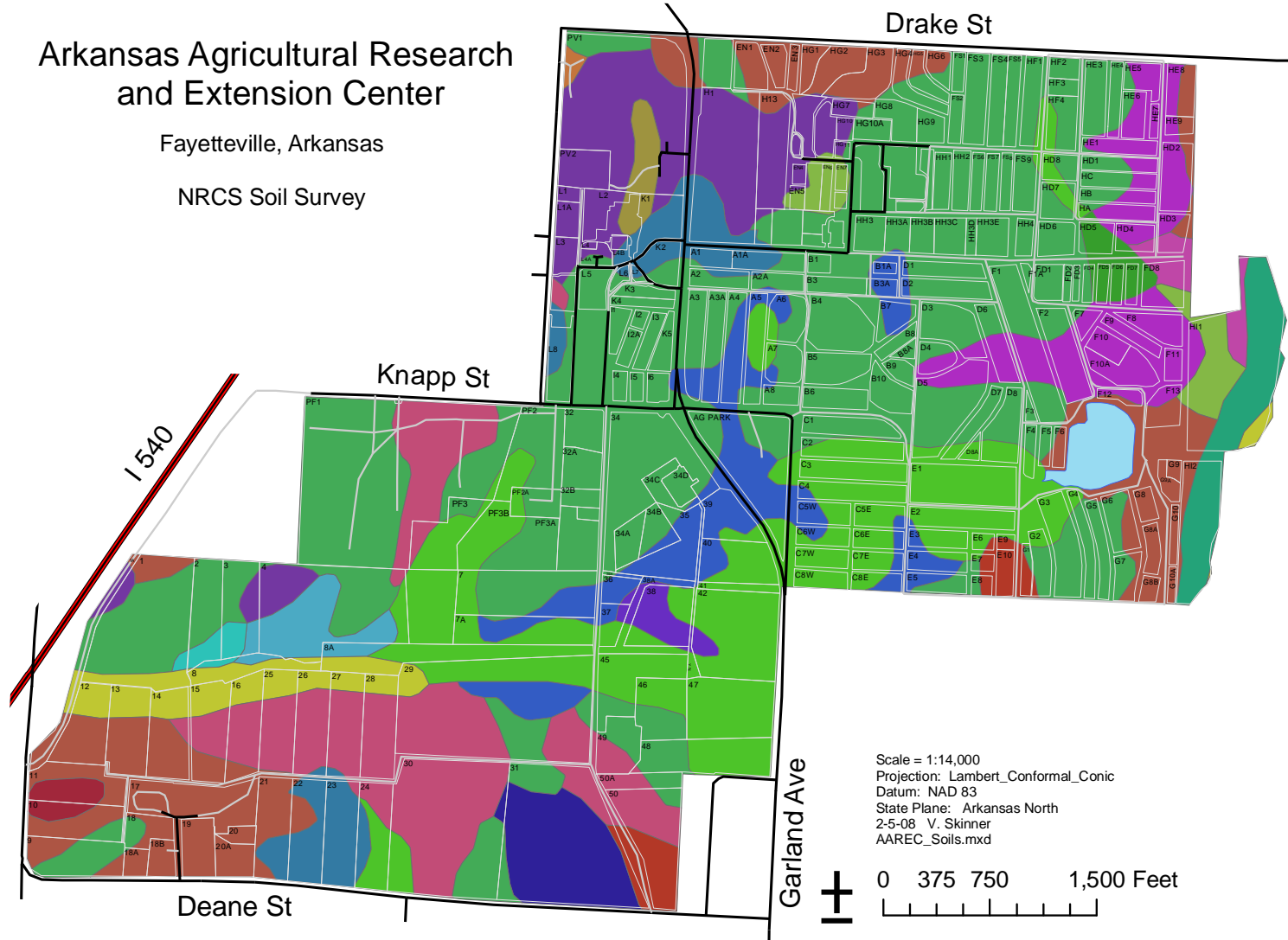


Arkansas Agricultural Research and Extension Center

Fayetteville, Arkansas

NRCS Soil Survey



Legend

NRCS Soil Survey

AAREC_SoilSeries08.MUNAME

- Baxter very gravelly silt loam, 8 to 12 percent slopes
- Captina silt loam, 1 to 3 percent slopes
- Captina silt loam, 3 to 6 percent slopes
- Captina silt loam, 3 to 6 percent slopes, eroded
- Cherokee complex, mounded
- Cleora fine sandy loam

- Hector-Mountainburg gravelly fine sandy loam, 3 to 8 percent
- Johnsburg complex, mounded
- Johnsburg silt loam
- Leaf silt loam
- Nixa very gravelly silt loam, 3 to 8 percent slopes
- Nixa very gravelly silt loam, 8 to 12 percent slopes
- Pembroke silt loam, 1 to 3 percent slopes
- Pembroke silt loam, 3 to 6 percent slopes, eroded

- Pickwick gravelly loam, 3 to 8 percent slopes, eroded
- Pickwick silt loam, 1 to 3 percent slopes
- Pickwick silt loam, 3 to 8 percent slopes, eroded
- Razort loam
- Razort silt loam, occasionally flooded
- Savannah fine sandy loam, 1 to 3 percent slopes
- Summit complex, mounded
- Reservoir